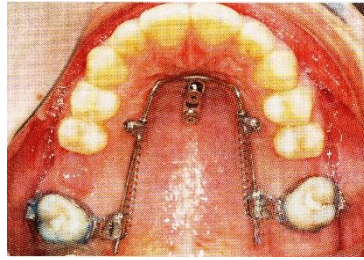


## BENEFIT PALATAL ARCH WITH TEMPORARY IMPLANTS(TADs)



This appliance is used when it is necessary to move one or more teeth, especially molars, and other solutions are not possible.

Two temporary implants or TADs are inserted in the palate. Temporary because they will be removed at end of treatment. Bone and gingiva will recover completely. Surprisingly removal is painless and does not require an anesthesia.

Two steps:

### **1/Palatal mini-implant and impression:**

It is like a « piercing » but in the palate. First a topic gel is applied for some minutes then an anesthetic is injected. No pain.

The two mini-implants are screwed in place without pain but with the feeling of pressure applied to the palate.

An impression is made in order to prepare the palatal arch Benefit at the lab.

### **Pain, Discomfort, Precautions:**

- Like with any treatment involving a painful tooth, a painkiller might be needed for 1-3 days.
- Rinse every evening for one week with chlorhexidine. 1 spoonful. We provide the solution.

A delay of 2 weeks is left to let the lab prepare the appliance and the patient to get used to have the mini-implants.

### **2/ Fitting of the palatal arch:**

It is a standard fitting of orthodontic appliance. Painless. No need for anesthetic.

Due to the pressure applied on the teeth, some patients may benefit of a painkiller after a couple of hours.

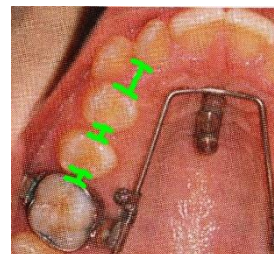
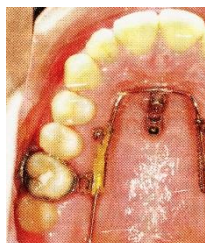
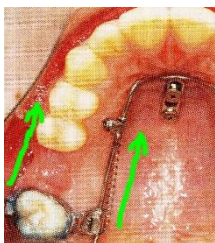
### **Problems:**

*Infection* : In ten years, never happened but if :

Recurrent pain,

Fever, call us.

*Problem with palatal arch* : displaced, broken, call us.



Photos Copyright Prof.Dr. Wilmes

Copyright Dr Dahlquist